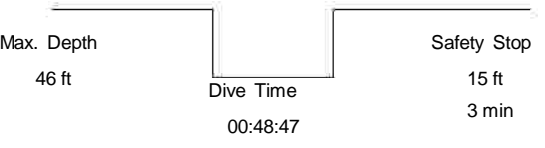


AQUALAND GRAPH Nx

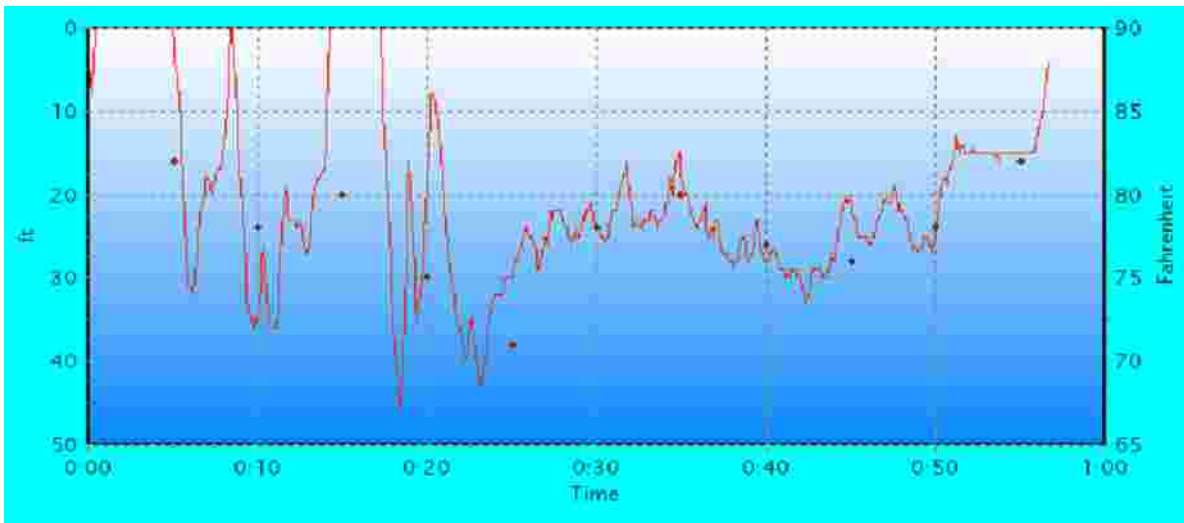
7/6/2008 - 2 Dive No.162

Blue Water Quarry [Pelham, Alabama]

Diver	Michael Ault	Tank Gas	Air
Dive Master	None		
Buddy	Barry Scuba Board		
D.Service	None		
S.I.Time	02:39:48	Weather	sunny
Time In	Ave. Depth	Time Out	Temp.
14:44:06	23 ft	15:40:48	93 Fahrenheit
			Ave.w.temp
			77 Fahrenheit
			Min.w.temp
			70 Fahrenheit
			Visibility H.
			25 ft
			Visibility V.
			25 ft
			Water Cond.
			calm
			Access
			shore
			Water Body
			Quarry
Diving Suit	drysuit	Tank	dual 80cf
Inner Wear	Upper fleece	Equipment	hood, gl.
Weight	10 pd		
Capacity	160 CUFT	Camera	Sea and Sea 10MP
Pres. In	3000 pd/sqin	Tank	Dual 80 CF
Pres. Out.	1500 pd/sqin	Lens	None
Air Consum.	19.4 pd/sqin/min	Protection	Drysuit



Much better trim, may be able to reduce weighting by another 2 pounds. Swam at 20-30 feet over to b us, then followed wall around past dive platforms to fire trucks and brimbeds.



AQUALAND GRAPH Nx



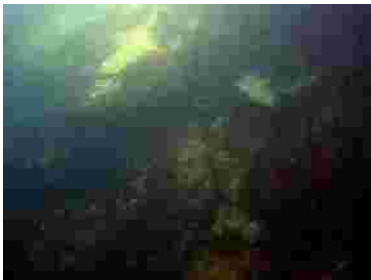
Blue water from surf



Blue water from surf



BKP showing trim



Lake Trout



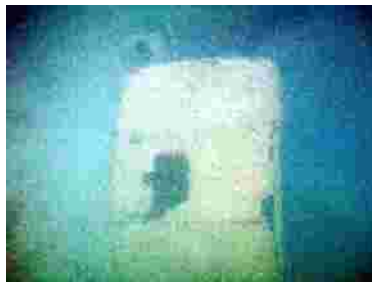
Concrete Pipes



BKP paddling along



Car



Top of firetruck



BKP by boat



Another Trout



Crappie beds



Top of firetruck

AQUALAND GRAPH Nx



Boat



Mike during stop



Inquisitive brim



BKP during stop



Bully Brim



Fish Whisperer...